

Spring 2020

# Eno River Currents





# EYES ON THE ENO

AN UPDATE FROM OUR EXECUTIVE DIRECTOR

Dear Friends,

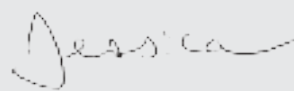
As I write, the landscape of daily life is substantially altered by COVID-19 and our necessary distancing response. I admit my daughter and I have found it arduous to be separated from our family, friends, the Brownie Troop, neighbors, and teachers. We have had to limit our visits to the Eno River, and are longing to get back!

The vibrant, essential role of the Eno River and surrounding parklands in our community has never been more tangible. Perhaps you are one of the thousands who have flocked to the woods, trails and riverbanks these past months. Whether by practicing social distancing as you enjoy the parks in person, or by browsing the Eno River Association website for photos and videos from the comfort of your home, I hope you found a path to keep yourself connected to this special place. I hope you have, and will continue to have, your Eyes on the Eno.

While the Association's office has been closed for several weeks, we have not slowed our mission to preserve the trails and conserve open spaces. Our Board of Directors has adapted to virtual meetings, furthering our strategic planning and advocacy work. Our stewardship and land protection efforts persevere. And as you will see on the opposite page, a tremendous gift from Ms. Joyce Brown allows us to increase our acquisitions in Orange County. I cannot find the words to express the gratitude we feel about this nearly two million dollar bequest, the largest ever to the Association.

Orange County lands along the Eno River continue to be a high priority for our watershed protection plan. These past years have seen incredible population growth in the County, and it is essential that we proactively preserve open spaces, protect wildlife corridors, and provide outdoor recreation areas for all. I hope you will join us in our ongoing efforts. Your support uplifts us, and, as you are able, I hope you will return the enclosed envelope with your generous contribution to our shared mission of protecting our beloved Eno River. Your renewed or increased membership giving is more relevant and important than ever before, and, for that, I am grateful.

Looking forward to seeing you soon,



Jessica Sheffield  
Executive Director

*Our mission is to conserve and protect the natural, cultural, and historic resources of the Eno River basin.*

**BOARD OF DIRECTORS**  
Don Moffitt, President  
Peter Schubert, Vice-President  
David Singleton, Treasurer

Richard Carroll  
Sara Childs  
Carol Charing  
Carson Harkrader  
Helen Kalevas  
Joe Liles  
Bercedis Peterson  
Peter Raabe  
Holly Reid  
Joyce Williams  
Sarah Woodard

*Emeritus*  
Don Cox  
Nancy Gustaveson  
Duncan Heron

**ASSOCIATION STAFF**  
**Jessica Sheffield**  
Executive Director

**Greg Bell**  
Festival Director

**Hillary Bruce**  
Assoc. Director of Development  
and Communications

**Dave Cook**  
Education and Outreach Coordinator

**Tom Davis**  
Stewardship Associate

**Emily Hill**  
Director of Development

**Kim Livingston**  
Director of Conservation  
and Stewardship

Cover photo by Joe Liles

# THE ROBERTA & HERMAN BROWN LAND PRESERVATION FUND

*“It is my hope that the community will be cognizant of environmental resources as they plan for potential growth.” – Joyce Brown, 2012*

Through a historic gift from the estate of Joyce Brown, the Roberta & Herman Brown Land Preservation Fund was established to provide resources for maintaining and purchasing land and easements in Orange County. Never one for the spotlight, Joyce Brown named the fund after her parents, but Ms. Brown's dedication to her community cannot be overlooked.

A long-time advocate for environmental issues, Joyce Brown was elected to the Chapel Hill Town Council in 1989. During her 12-year tenure, Ms. Brown focused on environmental and energy conservation, as well as neighborhood preservation. Ms. Brown was also active with several environmental groups throughout her lifetime, including Eno River Association, the North Carolina Conservation Council, and the Sierra Club, among others. Growing



up in Hillsborough, Ms. Brown held dear memories of wading and swimming in the Eno River. Ms. Brown had deep Orange County roots and was a direct descendent of Matthew McCauley, one of the original land donors who helped create the University of North Carolina. Part of the estate will also support a scholarship fund at UNC – Chapel Hill. In 2012, Ms. Brown was honored as a community treasure by the Chapel Hill Historical Society.

Ms. Brown's bequest will help carry on her dream of preserving natural lands in Orange County, and ensuring those lands support the needs of a growing community.

# LEAVING A LEGACY

If you want to see the river, its waters, parks, trails, wildlife and adjoining farmland cared for beyond your lifetime, consider making a planned gift to the Eno River Association to become a Legacy Member.

When you assess your planned giving options, you may see that you can make a greater impact on ensuring the Eno River flows for generations to come.

As a Legacy Member, you will receive special invitations, recognition, and benefits. Even if you prefer to remain anonymous, informing us of your intention ensures that we can plan for the future and steward your gift in the ways you intended. Thank you to our current Legacy Members.

To learn more about your planned giving options, contact Emily Hill, Director of Development, at 919-748-2126 or [emily@enoriver.org](mailto:emily@enoriver.org).

Providing a gift in your estate plans can include naming the Eno River Association as a beneficiary of the following:

- Will
- Retirement Plan
- Living Trust
- Donor Advised Fund
- Life Insurance Policy
- Charitable Remainder Trust
- Charitable Lead Trust
- Remainder Gift of Real Estate
- Or any other gift that benefits the Eno River Association in the future



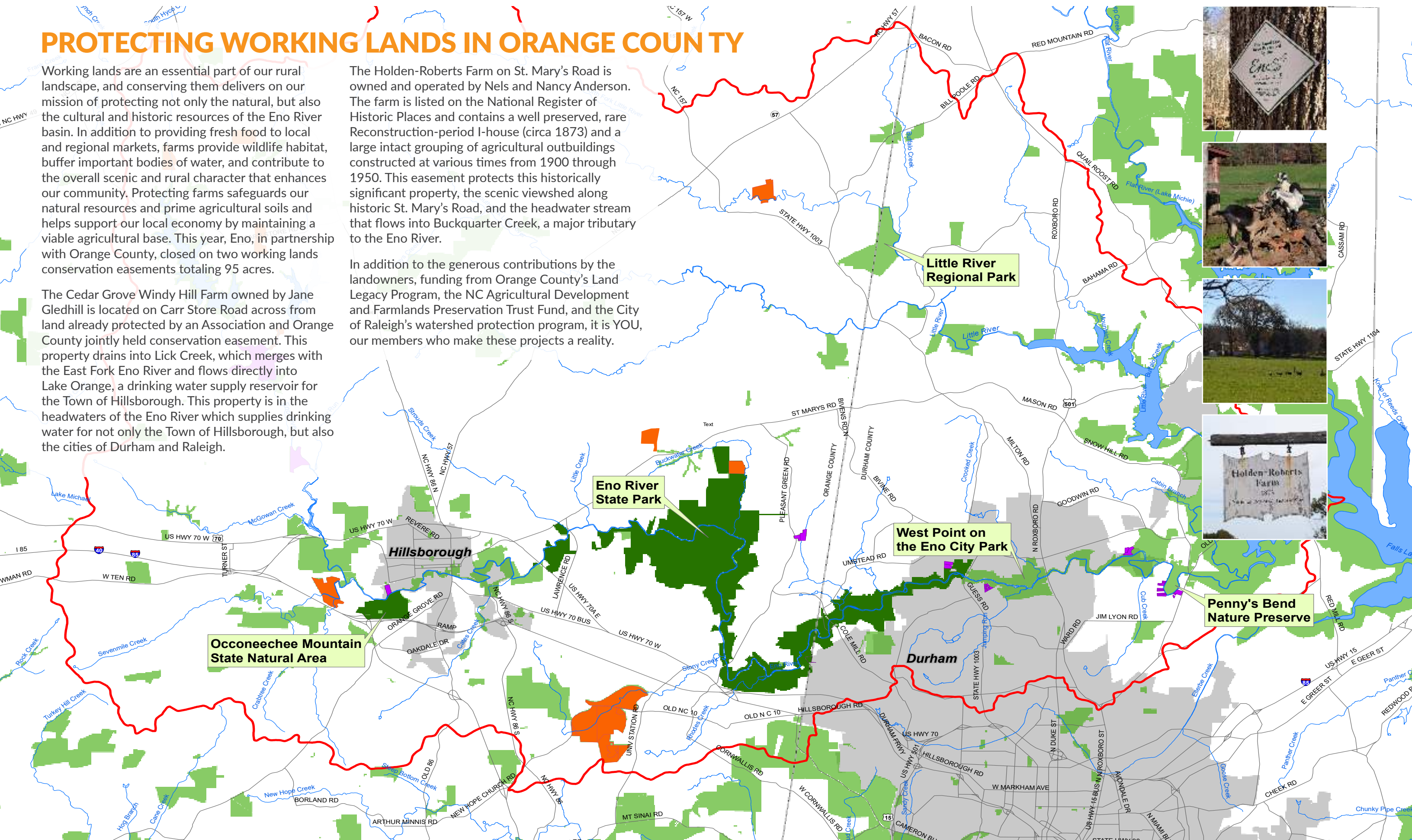
## PROTECTING WORKING LANDS IN ORANGE COUNTY

Working lands are an essential part of our rural landscape, and conserving them delivers on our mission of protecting not only the natural, but also the cultural and historic resources of the Eno River basin. In addition to providing fresh food to local and regional markets, farms provide wildlife habitat, buffer important bodies of water, and contribute to the overall scenic and rural character that enhances our community. Protecting farms safeguards our natural resources and prime agricultural soils and helps support our local economy by maintaining a viable agricultural base. This year, Eno, in partnership with Orange County, closed on two working lands conservation easements totaling 95 acres.

The Cedar Grove Windy Hill Farm owned by Jane Gledhill is located on Carr Store Road across from land already protected by an Association and Orange County jointly held conservation easement. This property drains into Lick Creek, which merges with the East Fork Eno River and flows directly into Lake Orange, a drinking water supply reservoir for the Town of Hillsborough. This property is in the headwaters of the Eno River which supplies drinking water for not only the Town of Hillsborough, but also the cities of Durham and Raleigh.

The Holden-Roberts Farm on St. Mary's Road is owned and operated by Nels and Nancy Anderson. The farm is listed on the National Register of Historic Places and contains a well preserved, rare Reconstruction-period I-house (circa 1873) and a large intact grouping of agricultural outbuildings constructed at various times from 1900 through 1950. This easement protects this historically significant property, the scenic viewshed along historic St. Mary's Road, and the headwater stream that flows into Buckquarter Creek, a major tributary to the Eno River.

In addition to the generous contributions by the landowners, funding from Orange County's Land Legacy Program, the NC Agricultural Development and Farmlands Preservation Trust Fund, and the City of Raleigh's watershed protection program, it is YOU, our members who make these projects a reality.



# WHAT YOUR GIFTS ACCOMPLISHED IN 2019

## LAND & WATER PROTECTION

7,472

**TOTAL ACRES OF LAND PROTECTED**  
for 1 million+ visitors & water  
for a half-million people downstream

LAND  
PROTECTED  
IN  
2019

77

acre easement on  
North Fork of Little River

56

acre working lands easement  
in the Middle Eno

40

acre working lands easement in  
Upper Eno

14

acres donated for Oconeechee  
Mountain State Natural Area

## NATURE & ENVIRONMENTAL SCIENCES EDUCATION

### MEETING THE NEED

Thanks to donors like you, the Burroughs Wellcome Fund, and Duke Energy, we provided our summer camp programs to families for **less than half the cost** of presenting them. On top of that, we provided additional scholarship support to 37 campers, 86% of whom attended camp at no charge.

**Education Programs  
Reached 1494 People  
(1096 Youth)  
Including...**

446

youth served  
through school  
outreach & field  
trips

396

hikers on 16  
Winter and  
Spring Hikes

156

Summer  
campers  
ages 8-15

150

volunteers  
and 400+  
youth at  
Festival EEEK  
Stations

120

Junior Ranger  
Patches earned  
at Eno River

51

students  
participated  
in workdays

48

youth  
participants  
at Stream-In

703

hikers on  
News Years  
Day Hike

## STEWARDSHIP OF OUR LANDS

25 stewardship workdays

nearly 500 volunteers

1,400 volunteer hours

75+ Eno River Trail Stewards

### Projects Completed:

- Town of Hillsborough Reforestation
- Pollinator Garden at Confluence Natural Area
- Trail maintenance along the Mountains-to-Sea Trail
- Invasive species removal
- Litter Pick-ups

## 40TH ANNUAL FESTIVAL FOR THE ENO

80

performers  
on 5 stages

85+

regional crafts  
artists

55+

non-profits and  
governmental  
agencies

680

festival  
volunteers  
delivering  
2,450 hours

32%

attend with  
one or more  
children

**Local economic impact of \$1.9 million\***

\*2010, Durham Convention & Visitors Bureau



# OUR FAVORITE LITTLE STINKER



## THE STRIPED SKUNK

Skunks are most famous for their smell, but skunks don't like their spray any more than you! Skunks will try other tactics first when feeling threatened. First they straighten their legs and arch their backs, put their tails straight up, bristling it to give the appearance of being larger. Threatened skunks may click their teeth or stomp their feet. (YOU TRY IT!) If that doesn't work, skunks can spray a yellowish noxious musk up to 16 feet with surprising accuracy. Skunk's spray contains sulfuric acid which can cause temporary blindness, in addition to the lingering smell.

We have plenty of skunks around the Eno, but they are mostly out at night when parks and trails are closed. If you sit very still in your next campsite you might see a

skunk ramble by looking for food. Skunks maintain a diet of mostly grubs, worms, small rodents, reptiles, and eggs but they also eat berries, acorns, and other vegetation they can reach from the ground. The best ways to avoid an unpleasant skunk encounter is don't leave food waste outside where they can get it, and don't feed pets outside. Trust us, stepping out on your porch to find a skunk eating out of the cat food bowl will set your heart racing!

## WHAT'S THAT BUZZING HOLE?

Walking on an Eno trail, you may encounter a hole in the ground, exposing some kind of beehive. That is a yellow jacket nest and the excavator is a striped skunk. Skunks consider yellow jacket grubs to be a tasty meal and are resistant to the effects of being stung. Lucky them!

## RECIPE

for eliminating skunk odor:

More effective than tomato sauce, which masks the smell, this simple at-home concoction should do the trick on that skunk smell!

### INGREDIENTS

- 1 quart of 3% peroxide
- ¼ cup baking soda
- 1 tablespoon liquid dish detergent

Mix well and spray on affected area



For more striped skunk information visit: [https://www.ncwildlife.org/Portals/0/Learning/documents/Profiles/Mammals/Striped\\_skunk\\_wildlife\\_profile\\_FINAL.pdf](https://www.ncwildlife.org/Portals/0/Learning/documents/Profiles/Mammals/Striped_skunk_wildlife_profile_FINAL.pdf)

## BUILDERS OF COMMUNITY



The Wilson family has been involved with the Eno River Association from the very beginning. Chuck Wilson remembers his mom,

Martha, rushing out to meetings and volunteer shifts with the Association in the 1960s and early 1970s. Charlie Wilson, Chuck's son and Martha's grandson, recalls growing up playing in the Eno and attending the Festival each summer. C.T. Wilson Construction Company, the family business, has been a supporter as well, sponsoring the Festival for the Eno for decades.

The Wilsons have made C.T. Wilson Construction Company into one of North Carolina's largest and most respected builders and renovators; specializing in complex projects for educational, health care, and worship uses, and providing new life to beloved historic properties such as Durham Athletic Park,

Golden Belt, and Rocky Mount Mills. Therefore, we are honored that C.T. Wilson would choose to boost their commitment to the community and demonstrate leadership by becoming the title sponsor of the 2020 Festival for the Eno.

***"I grew up on the Eno. It was always a part of my childhood. My grandmother served on the Eno River Association Board and she always had us help sell T-Shirts at the festival. The Eno is an important part of Durham and we are glad to be a part of supporting it,"***  
***-Charlie Wilson, President of C.T. Wilson Construction Company.***

In addition to their Festival support, C.T. Wilson Construction will be providing materials and labor to increase the parking at our Guess Road office for visitors to West Point on the Eno City Park.

"We are extremely grateful to C.T. Wilson Construction for their long-time support of the Festival and proud to be able to work with them as partners in increasing open space access for all" says Greg Bell, Festival Director.

## THIS REALLY STINKS: 2020 FESTIVAL FOR THE ENO CANCELLED



Photo by Caroline Cottrell  
See you soon!

It is with much sadness that we announce the cancellation of the 41st Festival for the Eno, scheduled for July 3 and 4, 2020. We do this following thoughtful deliberation and in consultation with our many partners including the City of Durham, Orange and Durham Counties, NC State Parks, and many local participants, sponsors, artists,

and friends. We waited as long as possible to make this decision, in hopes that we could present some scaled-down version of this beloved annual tradition this summer. Unfortunately, we can no longer see any feasible way to produce an event of this magnitude and complexity while ensuring the health and safety of everyone involved. Due to the continued uncertainty about the future spread of the COVID-19 virus, we do not plan to reschedule the 2020 Festival for the Eno.

**Please visit our website, [www.EnoRiver.org](http://www.EnoRiver.org) for more information on this decision, and for opportunities to support the Festival by making a donation, purchasing Festival tees and posters, or buying a "ticket" to support future Festivals for the Eno.**



# THANK YOU TO OUR GENEROUS SUPPORTERS

You make protecting land, water, and wildlife in Durham and Orange counties possible. Each and every gift we receive is vital to making our work possible. The following lists highlight our Wildflower Society members and special honorary and memorial gifts. We make every attempt to ensure accuracy when acknowledging donors and appreciate you notifying us of any errors at [hillary@enoriver.org](mailto:hillary@enoriver.org).

## Wildflower Society \$500 and Over

Leadership gifts made since January 1, 2019.

### BLAZING STAR – \$5,000 AND ABOVE

Anonymous  
Meredith Barrett & Aaron Stoertz  
Bill & Carol Charping  
Marcia Eickmeier  
Lonna & Richard Harkrader  
George & Rosemary Kolasa  
The Estate of Joyce Brown

Randy & Cathy Lambe  
David & Lissa Lutz  
Cathy Murphy & John Manuel  
John & Margaret March  
Debbie & Richard Marion  
Jennifer McDuffie & Hal Kuhns  
Brian & Sarah McGiverin  
Karen McLachlan  
Laurie McNeil & Pat Wallace  
Fred & Cathy Myers  
Marcia & Mark O’Neal  
John Pearson & Gail Goodling  
Bercedis Peterson  
Peter & Ona Pickens  
Mollie & Bill Purdy  
Elizabeth Robbins  
Jennifer & Lance Rogers  
Cynthia Satterfield  
Greig & Kristen Schneider  
Anthony & Stella Schomberg Fund of  
Triangle Community Foundation  
Brenda Brodie  
Sandy Davison  
Susan Gidwitz & Gail Freeman  
Virginia Gilbert  
Mary Love May & Paul Gabrielson  
Stuart & Linda Paynter  
David & Olivia Singleton  
Julia Tyler  
Chuck & Jean Wilson  
Chris Richmond & Lucy Wilson

### CRESTED IRIS – \$1,000 AND ABOVE

Anthony & Paula Adams  
Phyllis & Bob Andrews  
Anonymous  
Greg Beck  
Larry Bohs & Elizabeth Searles-Bohs  
Lynn Bowlby & Neal Ready  
James Brosnan  
Joel Bulkley  
Rick Burt  
Julie Chappell  
Jeff Chase & Nonna Skumanich  
Rush & Sara Childs  
Kevin & Patti Clayton  
Mary & Mike Cysz  
Barbara & Tom Driscoll  
Dr. Harold Erickson  
Chris Eubank & Lisa McQuay  
Mike & Ruth Freeman  
Christy & Jim Gudaitis  
Carson Harkrader & Gary Kueber  
Joyce Hopkins  
Alice & George Horton  
Ryan & Rebekah Kelly  
Charity Kirk  
Ann & Bill Kirkland  
Jeffrey & Lynne Koweeek

TRILLIUM – \$500 AND ABOVE  
Jean Anderson  
Anonymous  
Jenny Arcino & Ryan McCarty  
Dawn & Joel Battiste  
Eric Bauer  
Beverly Bell & Lucy Piner  
Steve Booth & Mary Lou Rollins  
Ann Bushyhead & John Valentine  
Dianne Byrne  
Jeanne & Bob Chamberlin  
Tom Cole  
Ann Colosia  
Sandra Cook & Chuck Darsie  
Spencer & Kristen Dicks  
Fred Dietrich & Jenny Tenor  
Karen Fieselma  
Dale & John Fluke  
Walter Fowler & Gail Boyarsky  
John Garrison & Alanna Howard  
Elsie Gillis  
Frannie Goodrich  
Edd & Gita Gulati-Partee  
Bob Hellwig & Gordon Whitaker  
David Henderson & Nancy Scott  
Jonathan & Sarah Hodges  
Benjamin & Nancy Hollifield

Barry & Robin Jacobs  
Pelham Jacobs  
Joyce Kurpiers & Tim Kelly  
Rick Larson  
Joe & Judy Liles  
Mac & Karen MacAulay  
Jennifer Maher  
Ann Matrone & Alan Seiferheld  
Gair McCullough  
Janis McFarland & Richard McLaughlin  
Amy McSwain & Garrick Skalski  
Pam Mears & Steve Pomeroy  
Bonny Moellenbrock & Michael Lowry  
Jonas & Maggie Monast  
David Montgomery  
Pamela Morse  
Michael & Morgan Moylan  
Thomas Narten & Susan Rodger  
Robert & Vicki Nebes  
Mike Salemi & Ariana Pancaldo  
Mary Panek  
Jennifer Peifer & Nicholas Plummer  
John Petranka & Sally Gewalt  
Beth Preslar & Raleigh Roark  
Holly Reid & Rich Shaw  
David Roswell & Margaret Heraty  
Erica Rothman  
Pete & Margaret Schubert  
Jessica Sheffield  
Bess Stephanz  
Richard Stern  
Jonathan T. & Kayla J. Stewart  
Anna Stout  
Tom Struhsaker & Theresa Pope  
Russell Thomas  
John & Nancy Wyman

## Foundation, Civic, & Corporate Support

Alternative Aire  
Anonymous  
The BIN Charitable Foundation  
BioMerieux  
Blue Cross Blue Shield  
of North Carolina  
Bull City Running  
The Bydale Foundation  
Carolina Academic Press, Inc.  
Cisco  
Citrix  
Conservation Trust for North Carolina  
CT Wilson Construction  
Dominion Energy

Duke Energy  
Duke Performances  
Eno Animal Hospital  
ENO Hammocks  
GlaxoSmithKline Foundation  
Google  
Grace Jones Richardson  
Testamentary Trust  
The Gratitude Fund  
Great Outdoor Provision Co.  
Harris Beverages  
Hendrick Subaru  
High Strung Music  
IBM  
IndyWeek  
James & Mildred Wilkinson Charitable  
Foundation Inc.  
KeVita Kombucha  
Larry’s Coffee  
Montessori Community School  
Murphy’s Naturals  
The Nandu Fund  
NC Solar Now  
New Belgium Brewing Company  
North Coast Brewing Company  
North Durham Orthodontics  
Parizade  
PHE  
Rauch Rainoff Foundation  
Red Pond Paradise Fund  
The Silver Foundation  
Southern Energy Management  
State of North Carolina Department of  
Agriculture & Consumer Services  
T-Mobile  
Topsail Technologies  
Triangle Community Foundation  
Triangle Fly Fishers  
TROSA  
Truist  
Vaguely Reminiscent  
Valic  
Zarazua Painting

## Special Gifts

The following lists recognize donors who made contributions to special funds between November 1, 2019 and March 24, 2020.

### IN MEMORY OF

Rand Allingham  
From Anna Stout  
Philip Wayne Arcuni  
From Kent & Cheryl Wicker

Saul Boyarsky From Walter Fowler  
Joyce Brown From Dr. Dan Graham,  
Bill Holman & Stephanie Bass, Betsy  
Jones, John Runkle  
Lois & Milton Colosia  
From Ann Colosia  
Gary Cutick From Lin Saberski  
James Davis  
From Carson & LouAnn Brisson  
Daniel Deter From Gretchen Wolf  
Thomas Land Fowler  
From Grant Fowler  
Kermit “Casey” Gilbert  
From Virginia Gilbert  
Norman & Ronnie Guttman  
From Marjorie Guttman  
Becky Heron From Jane & Phil Korest,  
Sherri Zann Rosenthal  
Silvia Heyden From Kenny Dalsheimer  
James Lee Holloway  
From David Holloway  
Jennifer “Kate” Howard  
& Sarah Moore  
From Cathy Chandler & Nancy Blood  
Jake & Jordan From Deborah Iden  
Mimi Kelly From Jill Staton Bullard  
Judy Martell From Lynn Maguire  
Margaret Nygard From Jerry Clem,  
Scott Herman-Giddens &  
Supatra Campbell  
Billy Olive From Eve Olive

Wendy Olson From Ellen McRae  
Edward Panek From Mary Panek  
Jessica Pitner From David &  
Jayne Bass, Esther & Peter Bent, Allen  
Holt, Barry & Robin Jacobs, Betsy  
McBrayer, David Montgomery, Tony &  
Jean Schibler, James & Cheryl Schram,  
NIRvana Sciences  
Seth Jurgensen Preslar  
From Beth Preslar & Raleigh Roark  
George & Mary Pyne  
From Margaret Clement  
Elijah Raymond From Ellen Reinhold  
Judith Rendall From David Rendall  
Dean Ruedrich From LeeAnn Burkwall  
John Schulz From Mark Schulz  
Virginia Tacey  
From April Tacey-Dickinson  
William Williams  
From the Williams-Kay Family

### IN HONOR OF

Jean Anderson From Cynthia Walker  
James Antczak & Ava Udvadia  
From Brian Antczak  
Joseph W. Beagle, Sr.  
From Jean Ristaino  
Tom Beck, Todd Ellis,  
& Shannon Brown From Melissa Griffin  
Melissa Dean From Katrina Smith

Anna, Donovan, & Jackson Dewitt  
From Elizabeth Albright  
Barbara Driscoll From Dianne Byrne  
Marcia Eickmeier From Lynn Wilson  
Bridget & Tim Fletcher  
From the Gildy Family - Holly, Chris,  
& June  
Carolyn Hodes From Judy Kincaid  
Denny Hood & Barney Dale  
From Emily Dale & James Yance  
Robin Jacobs From Sue Alexander  
Joyce Kurpiers & Tim Kelly  
From Eileen Kurpiers & Steve Crum  
Abbie Lehman From Judy Kincaid  
Mindy Oshrain From Stephen Jaffe  
Milo Pyne & Alexa McKerrrow  
From Michael & Mary Andrews  
Tori Reynolds & John Beerman  
From the Smith-Smith Family  
Cynthia Satterfield  
From LeeAnn Burkwall  
Steve Schafer From Owen Martin  
Jessica Sheffield From Sue Alexander,  
Brian & Jeanne Murray  
Scott & Kelly Sigethy  
From Joseph English  
Stanley & the Eno Dogs  
From Cassandra Proper  
Town of Hillsborough  
From Tom Stevens & Debbie Simmers

Meriwether Walker  
From Margaret Clement  
Lew & Sally Wardell  
From Travis Wardell  
Robert Wexler  
From Emily Wexler & David Glenn

## Named Funds & Endowments

The following funds have been named to honor those who have generously contributed to the Eno River Association:

Allen Lloyd Fund for the Upper Eno  
The Confluence Fund  
Conservation Land Stewardship  
Endowment Fund  
Festival for the Eno  
Margaret C. Nygard Land  
Acquisition Fund  
Roberta & Herman Brown Land  
Preservation Fund

# SUSTAINING SUPPORT IN CRITICAL TIMES

Your support matters. Your gifts have protected 7,472 acres throughout the Eno River basin – and counting – and educate future generations of conservationists. Now more than ever, Eno River Association Sustaining Members - those who give on a monthly recurring basis - are providing us an anchor. These consistent, monthly gifts bring stability, maintain our support of natural lands, and allow us to continue to plan for the future.

Your \$15/month provides two Eno education programs to a local elementary school – we average 42 of these each year

Your \$25/ month supports the replacement of the tools staff and volunteers use to steward the 7,377 acres.

Your \$42/month can purchase 1/10 of an acre of land in our watershed and also gives you the benefits of Wildflower Society membership!

As our Board Treasurer, David Singleton, notes: **“Monthly gifts provide critical support in the form of predictable revenue, so the Association can focus on what it does best – protecting the places we all love.”**

Together, we are defending lands along the river, restoring habitat & building trails, and reaching tens of thousands of people annually with outdoor experiences and programs that connect them with the natural world. Become a Sustaining Member today by visiting [www.enoriver.org/donate](http://www.enoriver.org/donate).

Thank you to our current Sustaining Members who give on a monthly or quarterly basis:

Anonymous  
Scott & Allison Belan  
Hillary & Kate Bruce  
Rick Burt  
Anne Cherry  
Sara & Rush Childs  
Paula Coughlin  
Elizabeth Dray  
Dianne Freund & Joe Galas  
Conrad & Virginia Hall  
Robert Heinich

Emily Hill  
Jane Hoppin  
Elizabeth & Martin Hubbe  
Robin & Barry Jacobs  
Mary Jeffries  
Ryan & Rebekah Kelly  
Harriet & Michael Lakin  
Barbara Lipes & Heather MacDonald  
The Livingston Family  
Jody Maxwell  
Mitchell Moehring

Todd & Kathleen Nance  
Diana Neunkirchner  
Emily & James Pearce  
Jennifer Peifer & Nicholas Plummer  
Alexander Raines  
Gwen Reid  
Jason Richmond  
Cynthia Satterfield  
Bradley Saul  
Margaret & Pete Schubert  
Jen & Michael Shepherd

Beth Shulman  
Jeffrey & Eileen Soo  
Richard Stern  
Julia Tyler  
Adam Wenzlik & Kathryn Bailey  
Robert Wright &  
Kathleen Geidel Wright  
Kristin & Joel Wright  
Susan Zarutskie  
The Zener Family

*We are a proud member of*



*Eno River Association is proud to be an accredited land trust.*



*This Newsletter is printed on SFI certified and FSC certified paper, sourced in an environmentally-friendly, socially responsible manner.*



## IGNITING CAREERS IN STEM ALONG THE ENO RIVER

Angela attended iWalk the Eno Science and Nature Camp for the first time in 2014 when she was ten years old. Being immersed in the forest and the river sparked something in Angela, and she returned to iWalk three summers in a row. This participation and her enthusiasm for the natural sciences, meant that she was a perfect fit to serve as a Junior Mentor when she entered middle school in 2017. She returned as a Junior Mentor in 2018, and also enrolled in our Eno River Field Station program. At Field Station we witnessed Angela's fascination with science blossom, particularly in herpetology. (You can always count on her wanting to hold the snakes!) In 2019, Angela was promoted to a paid position as an iWalk Alumni Mentor and she returned to Field Station as well. When 14-year old Angela was asked her career goals, she said she wanted to "be a dancer, but maybe a scientist." A year later when the youth staff were asked who wanted to go into science as a career, Angela raised her hand. We are so proud of Angela, and humbled that her STEM-based leadership journey was sparked by our programs.