

Summer 2017

ENO RIVER CURRENTS

Eno River Association



Panthers Branch, a tributary of the Eno River, flows through the recently protected Iski property.



The mission of the Eno River Association is to conserve and protect the nature, culture, and history of the Eno River basin.

Board of Directors

Barbara Driscoll, *President*

Alanna Garrison, *Vice President*

Carson Harkrader, *Treasurer*

Bercedis Peterson, *Secretary*

Sara Childs

Pete Schubert

Jo Fisher

David Singleton

Joe Liles

Emeritus:

JoEllen Mason

Don Cox

Milo Pyne

Nancy Gustaveson

Holly Reid

Duncan Heron

Mike Salemi

Staff

Robin Jacobs, *Executive Director*

Greg Bell, *Festival Director*

Cynthia Satterfield, *Development Director*

Hillary Bruce, *Assoc. Director of Development & Communications*

Dave Cook, *Education & Outreach Coordinator*

Carolee Helgesen, *Volunteer Coordinator*

Gaby Benitez, *Education Intern*

Kate VanVorst, *Asst. Festival Coordinator*

Rivka Grossinger, *Festival Intern*

Contact

4404 Guess Road

Durham, NC 27712

919-620-9099

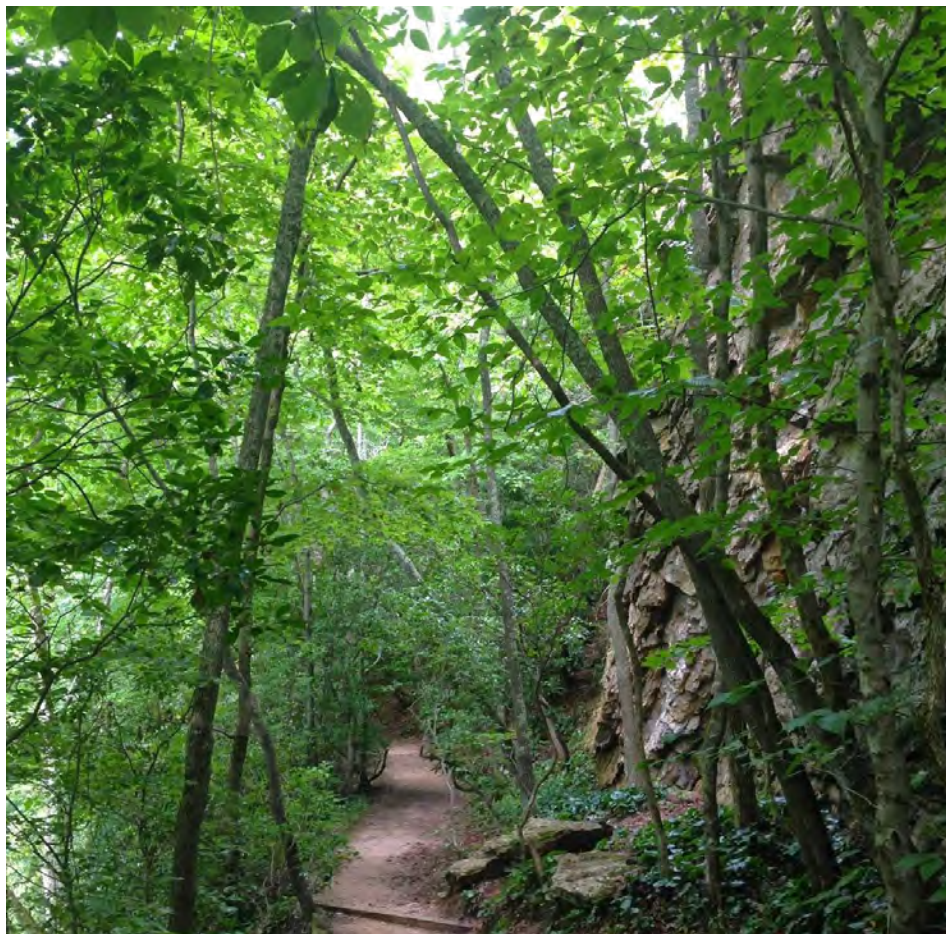
association@enoriver.org

www.enoriver.org

Layout & Design, Janice Eten

Grapevine Print & Design

Printed on post-consumer content



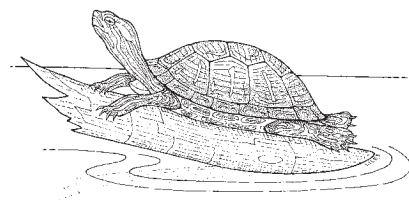
When someone has a personal relationship with a beautiful river, a favorite trail or other special place in nature, they want to protect it. It's for this reason that we invite you to the river each year to celebrate the 4th of July with us at Festival for the Eno.

The Festival touches people with all the things we do. Yes, it's an important fundraiser. But, it also invites people to participate in our conservation efforts. At the Festival, you can sign up to get hands-on as a stewardship volunteer. You can meet the critters living in and along the river. You can learn about the Eno's history by visiting the working West Point mill and other historic buildings. Festival for the Eno celebrates local culture as well, providing a stage for craft artists, musicians, and other performers. In its 38th year, the event itself has become an important part of Durham's cultural fabric. Most of all, our Festival brings people out to make personal connections and deepen existing bonds with the Eno and our natural world.

If you're reading this, the Eno has probably already made an indelible impression on you. I hope you will be an ambassador for the river, and invite your friends, relatives, neighbors and coworkers to come out to the Festival this year so they can make their own connection. Only together can we save these places we love.

See you at the river!

Robin Jacobs



Increasing Protection in the Upper Eno: 85-acres Conserved

Kim Livingston

As this newsletter goes to print, the Eno River Association is busy protecting two properties in the Upper Eno, as well as making good progress on five additional projects. The Upper Eno is a conservation focus area for the Association because it is not only the headwaters of the Eno River, but also the Neuse River. Protecting source waters helps provide clean, dependable drinking water to downstream users such as Hillsborough, Durham, and Raleigh by filtering nutrients and sediments, moderating water temperatures, and reducing flood risks.

Earlier this month, adding to the growing number of protected lands in the Upper Eno, the Association protected 56-acres

of land on Lebanon Road west of Hillsborough, less than a mile upstream of Corporation Lake. The property provides permanent stream buffer protection for over 3,600 linear feet on the Eno River and 2,200 linear feet along two tributary streams (see cover photo of Panthers Branch), as well as valuable wildlife habitat. This stretch of the Eno River is part of the Eno River Aquatic Habitat Natural Heritage Area, considered by the State of North Carolina to be of national significance. The area supports a number of rare freshwater mussels and fish, including the state endangered Atlantic pigtoe, yellow lampmussel, and Eastern lampmussel, as well as the federally endangered dwarf

wedgemussel.

Funding for the project has been provided by the City of Raleigh, the Eno River Association's Allen Lloyd Fund for the Protection of the Upper Eno, the Margaret C. Nygard Land Acquisition Fund, and most importantly, the landowners. Grants and contributions are still being sought to defray \$285,000 in remaining project costs.

Within the next few weeks, the Association, in partnership with Orange County, will also place a 29-acre conservation easement on 3,000 linear feet along Lick Creek and its feeder streams. Lick Creek is a major headwater stream that flows to the East Fork Eno River and Lake Orange, a drinking water reservoir for

the Town of Hillsborough. The property is located on Carr Store Road in Cedar Grove and is owned by Geof and Jane Gledhill. The Gledhills' own generous contribution to the project, funding from Orange County's Land Legacy Program, and a grant from the City of Raleigh made the project a reality.



Lick Creek on the Gledhill property.

Why I Give to the Stewardship Fund

Sandy Davison,

Former President Eno River Association Board of Directors

This year to celebrate my 90th birthday, my family made a special contribution to the Eno River Association's Stewardship Fund. Protecting rivers, and particularly the Eno, has long been an interest of mine. I have been convinced for many years that intact, well-maintained riparian lands are effective tools for assuring the integrity of our country's rivers.

One strategy the Eno River Association uses is working with landowners to put permanent conservation easements in place that protect the conservation values of private land. However, these easements then need continuous attention and service

by both the Association and the landowner, even if the ownership changes. To fulfill its part of the agreement, the Association must maintain an active interest in the property through visitation and consultation with the landowner. Another conservation strategy the Eno River Association uses is purchasing land outright. This approach makes the Association not only a landowner, but also a land manager.

The stewardship activities for both conservation easements and fee-owned land requires time and, hence, funds. The Stewardship Fund is a growing endowment that generates the

funds the Association needs to protect these lands in perpetuity. When I was told of my family's intentions to make a special contribution to the Association, and given a choice among the four funds available, I chose the Stewardship Fund. These monies are essential for us to keep the bargain we make when we permanently protect land, and in truth, the bargain we make with the river itself.



Ongoing stewardship, such as this trail re-routing at Cox Mountain with a volunteer crew from Burt's Bees, is an important part of Eno River Association's work.

J. Horst Meyer Bequest Supports Land Protection Along the Eno

The Eno River Association is honored to have received a bequest from the late J. Horst Meyer, a highly regarded physicist who taught at Duke for more than 50 years and died last August at the age of 90. A long-time member of the Association, Dr. Meyer made the gift to the Margaret C. Nygard Land Acquisition Fund, a restricted fund used to purchase land along the Eno and its streams. The Association has already used some of the over \$215,000 gift to secure a mile of river and stream front in Orange County.

Both general and restricted bequests can be made to the Eno River Association. To learn about making a bequest or other planned gift, go to <http://www.enoriver.org/support-us/leave-a-conservation-legacy/>.

Breaking Ground at the Confluence Natural Area

Kim Livingston

We are moving and shaking on the development of our Confluence property to open it to the public by 2018. The natural area, located just north of Hillsborough, is a special place, both culturally and environmentally, and it is time to share it with the public! Since 2015, we have built a parking lot, nearly three miles of trail, and a privy. In May, we broke

ground on an open-air pavilion that will anchor a sensory garden and house school programs and community events. Besides sheltering environmental ed groups and event participants from the weather, we will encourage local planning and design students to use it as a teaching example of how environmental sustainability can be integrated into urban plans

and landscape designs. The pavilion was designed by noted architect Giles Blunden and is being built by Charles Woods Builder. We are grateful to our project funders, the James M. Webb Trust and Burt's Bees Greater Good Foundation, and are excited to show off the new structure at special events this fall.



The architecture plan for the open-air pavilion at Eno River Association's Confluence Natural Area, currently under construction.

Save the Date!

Confluence Events this Fall

Friday, September 22 - Wildflower Society Event

Saturday, October 7 - Jambor-Eno

Critters, Kids, and Science

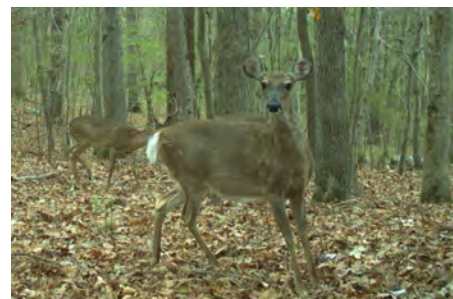
Dave Cook

In late June, iWalk the Eno Summer Science and Nature Day Camp, which has filled its registration slots for this year, will begin. Now in its 10th year, iWalk is hands-on, feet-wet discovery of the Eno River for children ages 8 to 12 at Eno River State Park. Next summer, in addition to iWalk the Eno, the Eno River Association will hold its first one-week Eno Environmental Experience at our Confluence Natural Area. The Experience is a science academy for middle and high school students, and will focus on research in environmental science, zoology, botany, and biology. Both camps are supported by grants from the Burroughs-Wellcome Fund and

the Duke Energy Foundation. Candid Critters, a three-year statewide inventory of wild mammals in North Carolina led by the NC Wildlife Resources Commission, will be a part of both iWalk and the Experience. Mammal species and distributions are documented by volunteers on wildlife cameras and the data is submitted online. The Eno River Association has a registered wildlife camera that moves every three weeks to capture wildlife information in different locations in parks and preserves on the river. iWalk campers will use the images to learn native wildlife identification. Participants in the Experience will use the camera as they

conduct wildlife inventories at the Confluence.

To learn more about iWalk the Eno, visit our website at www.iwalktheeno@enoriver.org. Keep an eye out for future information about the Eno Environmental Experience.



A particularly personable and camera-centric whitetail deer captured on a candid critters camera in Eno River State Park near Sterling Drive in Durham.

Featuring over 60 artists on four stages including:

Antibalas, Ruby Amanfu + Steelism, A.J. Ghent [j ent], Diali Cissokho & Kaira Ba, the African American Dance Ensemble, Orquesta Gardel, the Gospel Jubilators, Dr. Bacon, Happy Abandon, Blue Cactus, Tan & Sober Gentlemen, Boom Unit Brass Band, Violet Bell, Apple Chill Cloggers, Cole Slaw, Jon Shain, Paperhand Puppet Intervention, Lightnin' Wells, Emily Musolino Band, Jamie Anderson, Tea Cup Gin, Nee Ningy Band, Crystal Bright & Silver Hands, Lud, Kate Rhudy, John Dee Holeman, Eno Islanders, Cane Creek Cloggers, Ellis Dyson & the Shambles, the Pinkerton Raid, Dark Water Rising, & many more...

Plus craft beers and hard cider, dance and instrument workshops, backyard farming and clean energy demos, 80 regional craft artists, hands-on fiber and clay activities, paddling and splashing in the river, the West Point mill, and kids games and activities all on the shaded banks of the Eno River.

The Eno River Association was blessed to have Chuck Davis grace the Meadow Stage as a Festival for the Eno regular since 1990. He brought to the Eno a love of our shared environment and our shared community. His powerful spirit will be sorely missed. Ago! Ame!

10am ~ 6pm

38 FESTIVAL FOR THE ENO

SATURDAY, JULY 1 &

WEST POINT ON THE ENO

Photo by Sunshine Scoville



Antibalas
Photo by Marina Abadjieff



Ruby
Amanfu



Steelmism



A.J. Ghent [j ent]

You Can Support the Festival, and Here's How

We all love a good party, but someone's got to pay the band, right?! Especially when at the end of the day (or two days in this case), we're trying to raise lots of money for land and water protection. Ticket and merchandise sales only get us so far; sponsorships also play a big part in our fundraising, and come with terrific benefits.

Individual/Family Sponsorships

We've rolled out an awesome new Individual/Family Sponsorship this year. For \$400, you can receive four 2-day VIP passes providing access to preferred parking (no shuttle ride), complimentary drinks at any Eno drink booth, tee shirt and poster vouchers, and four tickets to the Festival raffle (you'll be automatically entered to win). You also get to wear an official Festival for the Eno lanyard. How cool is that?

Business/Corporate Sponsorships

Business and corporate sponsorships are available from \$600 to \$10,000, and offer benefits ranging from a banner display and logo placement to stage announcements and recognition on WUNC radio. Eno River Association is proud to promote local businesses and global corporations alike. Join Alternative Aire, C.T. Wilson Construction Company, NC Solar Now, Harris Beverage, Weaver Street Realty and others in supporting the Eno's protection.

How to Sponsor Festival for the Eno

No matter your budget, Eno River Association has a sponsor level for you, and exceptional benefits to go along with it. To view our sponsor deck, contact cynthia@enoriver.org. Choose the level that best meets your needs, and we'll get you going. Don't miss this great opportunity to get involved!



Photo by Sunshine Scoville



Photo by Colleen Barclay

Kids of all ages participated in Eno River State Park's interactive hydrilla maze at last year's Festival.



We're excited to announce that refreshing Bold Rock Hard Cider will be offered in the Festival for the Eno beer garden this year!

What's Your Raffle-Winning Strategy?

From using pre-printed return address labels for filling in their tickets to careful crinkling and folding, people use all sorts of strategies to win the Festival for the Eno raffle. And with so many awesome prizes, there's more incentive than ever to win this year.

Prizes vary from original artwork to gift certificates for services and fun outdoor experiences. This is your chance to win a trip with the Nantahala Outdoor Center, eat a well-deserved meal at PICNIC, take in a performance at the American Dance Festival, or stay at ALOFT Hotel.

You don't even have to wait until Festival for the Eno. You can drop in at the Eno River Association office or contact Carolee (919-620-9099 x 205 or carolee@enoriver.org) to purchase raffle tickets in advance. They're a cool \$5.00 ea. or save 20% when you buy five or more.

There's also still time to donate new goods and services. If you're interested in making a donation, email carolee@enoriver.org. She'll even arrange a pick up!

So... how many raffle tickets can we count you in for?



Wanted: Festival Volunteers!

Are you in town this summer? Are you looking for something to do over the 4th of July weekend? Where else besides the Festival for the Eno can you find international food, four stages of continuous live music, artists from all around the southeast, and the beautiful Eno River?

Come be a part of the 400 volunteers that make the Festival for the Eno happen!

The volunteer online sign up site is now taking registrations. Go to www.enofest.org and click on "Support," then "Volunteer," and choose the area, date, and time you'd like. If you prefer, call Carolee, our Volunteer Coordinator at 919-620-9099 x205, or send her an email at carolee@enoriver.org. She'll be happy to help.



Photo by Caroline Gilmore

Stop by the Big Top to visit our wonderful volunteers, including Judy Liles pictured here, and purchase the latest Festival merchandise.

CONTRIBUTORS TO THE ENO RIVER ASSOCIATION

You make protecting land, water, and wildlife in Durham and Orange counties possible. As our list of contributors has grown, it has become an increasing challenge to recognize everyone in our print newsletter. The following list recognizes our Wildflower Society members and special honorary and memorial gifts only. We make every attempt to ensure accuracy when acknowledging donors and appreciate your notifying us of any errors.

The Wildflower Society (Leadership Gifts of \$500 or more since January 2016)

Guenevere Abernathy & Michael Lemanski
Anthony & Paula Adams
Diane Allen & Chad Hughes
Jean Anderson
Phyllis & Bob Andrews
Donna Baird
Barbara Baker & Don Kritsch
Andy Balber & Frances Kerr
Meredith Barrett & Aaron Stoertz
Jill & Tom Bashore
Dawn & Joel Battiste
Freeman & Marcia Beard
Greg Beck
Beverly Bell & Lucy Piner
Greg Berg & Barb Mozena
Steve Booth & Mary Lou Rollins
Jenny & Christopher Boyce
Brenda Brodie
James Brosnan
Joel Bulkley
Rick Burt
Bill & Carol Charping
Sara & Rush Childs
Tomoko Chubachi
Ann Colosia
Mary & Mike Cysz
Hunter Daughtrey
Sandy Davison
Lynn & Tom Davison
Shirley Drechsel & Wayne Vaughn
Barbara & Tom Driscoll

Lori Etter
B. Franklin
Alanna & John Garrison
Sally Gewalt & John Petranks
Susan Gidwitz & Gail Freeman
Ginny Gilbert
Robin Godwin
Betty Grant
Christy & Jim Gudaitis
Nancy Gustaveson
Patricia Harding & Donna McCarraher
Carson Harkrader & Gary Kueber
Lonna & Richard Harkrader
Margaret Heraty & David Roswell
Duncan Heron
Richard Hill & Scott Hill
Matt & Kathy Hoover
Alice & George Horton
Tom & Elvira Howard
Sally & Rob Jackson
Barry & Robin Jacobs
Ann & Bill Kirkland
Trish & Louis Kohler
Randolph & Cathy Lambe
Gwendolyn & Roland Leary
Cliff & Lynn Leath
Richard Low & Anne Almond
David & Lissa Lutz
Jennifer Maher
Joe & Melissa Marion
Ann Matrone & Alan Seiferheld

Mary Love May & Paul Gabrielson
Carol McCormick & Mark Peifer
Melissa McCullough
Brian McGiverin
Karen McLachlan
Laurie McNeil & Pat Wallace
Lisa McQuay & Chris Eubank
Bonny Moellenbrock & Michael Lowry
Rich & Julie Mooney
Cathy Murphy & John Manuel
David Myers
Barbara Newborg (deceased)
Carolyn Norris & Marc Fowler
Lawrence Ostrowski
Mary Panek
Beredis Peterson
Peter & Ona Pickens
Bruce & Jessica Pitner
Gerald & Kathleen Ponder
Tom Struhsaker & Theresa Pope
Lucia Powe
Rep. David & Lisa Price
Karen Prus & Lewis Carson
Mollie & Bill Purdy
Marjorie Ray
Neal Ready & Lynn Bowlby
Holly Reid & Rich Shaw
Gwen & Bill Reid
Jen & Scott Renninger
Elizabeth Robbins
Mike Salemi & Ariana Pancaldo

Cynthia Satterfield & Dean Ruedrich
Pete & Margaret Schubert
Nancy Scott & David Henderson
Todd & Kathleen Shapley-Quinn
Cynthia Shimer & Eric Wiebe
David & Olivia Singleton
Scott & Sarah Sipe
Garrick Skalski & Amy McSwain
Jeff Chase & Nonna Skumanich
Ruth & John Stanton
Bess Stephanz
Anna Stout & Rand Allingham
Linda Swain & Stuart Paynter
Timothy Sweeney
Aimee Tattersall
Tweedy Tattersall
Margarita & Michael Throop
Rhonda & Stephen Tsotsoros
Julia Tyler
Susan Van Eyck & Barry Johnson
Torey & Erik Wahlstrom
Stephen Wainwright
Edwin Ward
Zebrina & Chad Warner
Renee Weisner & Ken Schmader
Lynn Whitaker
Wenny Wigley & Kevin Magill
Chuck & Jean Wilson
Bonnie Wright & Martin Eakes

SPECIAL GIFTS

The following gifts received after October 31, 2016 recognize special individuals, places, or occasions.

In Memory Of

Philip Wayne Arcuni
from Kent & Cheryl Wicker

Wallace Burke
from Randy & Sara Corriher

Kermit Gilbert
from Camille, Shapard, Camille & John Ashley

Kenneth & Katherine Berger
Jane Caserta
Sarah Christine & Family
Thomas Diamond

Nancy Gibbs
Ginny Gilbert
designated to the Stewardship Fund
Deborah Jakubs & Jim Roberts
designated to the Stewardship Fund

Joy & George Langley
Jane Marks
Mr. & Mrs. John T. McCarley
Marjorie Ray
The Stausses
Ann & Donald Sweeney

Norman & Ronnie Guttman
from Marjorie Guttman
Becky Heron
from Jane & Phil Korest
designated to the Stewardship Fund

Silvia Heyden
from Kenny Dalsheimer & Marybeth Dugan

Margaret & Holger Nygard
from Bruce & Jessica Pitner
designated to the Margaret C.

Nygard Land Acquisition Fund

Edward Panek
from Mary Panek
David Suwala
from Nancy Scott & David Henderson
designated to the Margaret C. Nygard Land Acquisition Fund & the Stewardship Fund

Wendy Trueblood
from Barbara Yoder

Jane & Steve Vogel
from Elizabeth & Albert Harris
designated to the Margaret C. Nygard Land Acquisition Fund

In Honor Of

B.J. & Bill Boyarsky
from Gayle Boyarsky & Walter Fowler

The Cedar Grove Breakfast Club
from Charlotte & John Hughes
designated to helping provide the Eno River summer camp experience to local kids

Elizabeth Cruise
from Michael Moore

Matthew Degele
from Julie Kirkin

Marcia Eickmeier
from Lynn Wilson & Paul Killough

Chris Hill
from Richard Hill

William Kinsella
from Elizabeth Pitts
Designated to the Stewardship Fund

Jennifer McDuffie & Hal Kuhns
from Art & Mei-li Sivigny
*designated to helping provide the Eno
River summer camp experience to
local kids*

Mahua Mandel Family
from Bonnie Dye

Tim & Helga McAller
from Charlotte & John Hughes
*designated to helping provide the Eno
River summer camp experience to
local kids*

Kevin Mitchell
from Lynne O'Brien

David Monson
from Bonnie Monson
designated to the Stewardship Fund

Ken Mountcastle
from Brika Eklund

Elizabeth Peele, David Solow, & Ruby
Solow
from Lucia Powe

Blair Pollock
from Anita Myers

Rollin Russell
from Judy & Robert Allen
and Kelly Allen

William Shewmaker
from Sara & Rush Childs

Avery Grace Somarelli
from Michelle Bernstein & Jeff Hoerle

Bess Stephanz
from Lynn & David Harrington

Audrey & Cecelia Tannous-Taylor
from Sue & Bob Taylor

**Margaret C. Nygard Land
Acquisition Fund**
*contributions restricted to protecting
land along the Eno*

Guenevere Abernathy & Michael
Lemanski
Mark Ambrose
Christopher Aquino
Karen, Tim & Timothy Avants
Donna Baird
Natalie & Stacy Barbour
Barbara Barr
Dawn & Joel Battiste
B.J. & Bill Boyarsky
James Brosnan
Caroline Bruzelius & Anders Wallace
Dianne Byrne
Aaron & Stephanie Cain
Carolina Academic Press, Inc.
Kevin & Patti Clayton
Elizabeth Dyer & Art Mines

Valinda Dyer & Gaelen Jordan
Todd & Edna Gambling
Maidi Hall
Pete Hall
Carson Harkrader & Gary Kueber
Margaret Heath
Elvira & Tom Howard
Lisa Johnson
Trish & Louis Kohler
Douglas & Annie Long
Horst Meyer (deceased)
Mary Malicki & Nelson Boyette
Hilary & Jay Morris
Joyce & William Newton
Marc Fowler & Carolyn Norris
Mark Peifer & Carol McCormick
Lynn Richardson & Tom Krakauer
Michael Salemi & Ariana
Pancaldo
Margaret & Tim Sanford
Scott & Sarah Sipe
Millie Snider
The Sobsey Howell Family
Anna Stout & Rand Allingham
Tom Struhsaker, Theresa Pope &
Sam Struhsaker
Bruce & Lee Vrana
Margaret Wainwright
Wayne & Pat Walker
Kari Wouk

**Allen Lloyd Fund for the
Protection of the Upper Eno**
*contributions restricted to
protecting land along the
Upper Eno*

Steve & Liska Lackey
Roland & Gwendolyn Leary
Diana & Barry Phillips
Jack Smailes
Kimberly Van Noort & Dale
Wasson
Cynthia Walker
Sharon Whitmore & John
Mayfield
Chris Richmond & Lucy Wilson

The Confluence Fund
*contributions restricted to
stewardship & creating an outdoor
classroom at The Confluence
Natural Area*

Rosemary Edwards & Bill Baker
Joel Bulkley
Kathy Cox & Tim Rowles
Barbara & Tom Driscoll
Tweedy Tattersall

**Help Provide the Eno River
Summer Camp Experience to
Local Kids**

Lori Gittens
Jillian Panichelli

The Stewardship Fund
*contributions restricted to
the perpetual stewardship of
Association-owned conservation
lands*

Jack Caldwell
Jim Davis
Tom & Lynn Davison
Sandy Davison
Galia Goodman & Meredith
Emmett
Brandon Hluck & Alana Stanley
Jeffrey & Lynne Kowek
Jody Maxwell
Lawrence Ostrowski
Kathy & Gary Palmer
Jean Ristaino
Pete & Margaret Schubert
Judi & David Wilkinson
Harriet & George Williams

**Recent Donor Advised Gifts
made through the Triangle
Community Foundation**

Bascom Hall McKay & Frances
Clayton McKay Fund
Baskerville Fund
Jonathan T. & Kayla J. Stewart
Charitable Fund

**Employers Supporting the Eno
through Employee Giving
Campaigns, Matching Gifts, &
Volunteer Workdays**

Apple
Automatic Data Processing
BD
Blue Cross Blue Shield of North
Carolina
Burt's Bees
City of Durham
City of Raleigh
Deutsche Bank Americas
Foundation / Bank of America
Duke Energy Foundation
Matching Gifts Program
Duke University
Durham County Cares
Entercom Communications
Corporation
Google
GSK
Greater North Carolina Area
Combined Federal Campaign
Guilford College
IBM
Intel
Lenovo
Merge Records
Microsoft
Orange County
Qualcomm
Parion Sciences
Red Hat
RTI International
Self-Help Credit Union
Seventh Generation

State Employees Combined
Campaign
Town of Cary
Town of Chapel Hill
United Way of the Greater
Triangle
Wake County
Employees can make their gifts
directly & securely online at
www.enoriver.org

**Recent Foundation, Business,
Civic, & Corporate Support**

Biogen Idec Foundation Micro
Grants in Science Education
Fund
Bull City Running Company
Burroughs-Wellcome Student
Science Enrichment Fund
Burt's Bees Greater Good
Foundation
Carolina Academic Press, Inc.
Carolina Kayak Club
Duke Energy Foundation
F.M. Kirby Foundation
James M. Webb Trust
Mystery Brewing Company
Shimar Recycling
The Bydale Foundation
Townsend & Bertram & Co.
Triangle Community Foundation

**Festival for the Eno
Sponsors To-Date**

(Your Name Here!)
Alternative Aire / Amana
BB&T
bioMeriueux
Bold Rock Hard Cider
Cayman Jack
C.T. Wilson Construction
Company
Duke Energy
Durham Arts Council
Harris Beverage
Indy Week
Krave Kava
MATI Healthy Energy
NC Arts Council
NC Solar Now
PSNC Energy
Sweetwater Brewing
The Bicycle Chain
Topsail Technologies
Vaguely Reminiscent
VALIC Financial Advisors
Whole Foods
Weaver Street Realty
Zarazua Painting



4404 Guess Road
Durham, NC 27712

Non-Profit Org.
U.S. Postage
PAID
Durham, NC
Permit No. 680

We are proud to be a member of...



Support the Eno River Association

Want to help buy more land for Eno River State Park and protect other land for recreation, water quality, wildlife and farming? Join today! If you are not a member, why not join? If you have already paid your dues, share your love of the Eno with a friend or family member and encourage them to join the Eno River Association.

Eno River Association Membership Form

Clip and Mail to: 4404 Guess Road, Durham, NC 27712 or
join online at www.enoriver.org

Name _____

Address _____

City _____ State _____ Zip _____

Phone _____

Email _____

We do not share our donor list.

Method of Payment

☐ Check (Please make payable to the Eno River Association)

☐ Mastercard ☐ Visa Credit Card # _____

Signature _____ Exp. Date _____

☐ Or, click on "Donate Now" online at www.enoriver.org

Membership Level

- ☐ \$5000 Blazing Star*
- ☐ \$2500 Lady's Slipper*
- ☐ \$1000 Crested Iris*
- ☐ \$500 Trillium*
- ☐ \$250 Steward
- ☐ \$100 Protector
- ☐ \$50 Supporter
- ☐ \$35 Patron
- ☐ \$25 Friend
- ☐ \$10 Student

* *Wildflower Society*



All donations are tax deductible. Thank you for your contribution.