

# COMMON INVASIVE PLANT SPECIES GUIDE

## TREE-OF-HEAVEN

(*Ailanthus altissima*)

- Crushed leaves and stems smell like burnt peanut butter
- Small to medium size with smooth gray bark
- Base of leaves have small 1-2 protruding bumps



## AUTUMN OLIVE

(*Elaeagnus umbellata*)

- Small tree/bush with small, oblong, dark green leaves with silvery underside
- Fragrant white or pale yellow tubular flowers in May-June replaced by small round reddish fruit dotted with silver or brown scales



## BRADFORD PEAR

(*Pyrus calleryana*)

- Round, dark green, glossy leaves and five-petaled white flower clusters in early spring
- Pyramidal dome with splitting branches
- Distinct pungent smell when in bloom





## CHINESE PRIVET

(*Ligustrum sinense*)

- Shrub or small tree, often grows along river and stream banks
- Consists of many branches that arch gently downward
- Leaves are directly opposite of each other (share a node)
- Small, plentiful, fragrant flowers when in bloom



## CHINESE WISTERIA

(*Wisteria sinensis*)

- Woody vine with fragrant clusters of drooping lavender flowers that bloom in the spring
- Twines upward in a clockwise direction
- Long dark green leaves that come to a point, similar to walnut leaves appearance



## ENGLISH IVY

(*Hedera helix*)

- Evergreen climbing vine
- Dark green leaves with white venation
- Three to five-lobed leaves (five being most common)



## HEAVENLY BAMBOO

(*Nandina domestica*)

- Upright evergreen shrub with terminal clusters of bright red berries
- Reddish new growth and fall foliage



## JAPANESE PRIVET

(*Ligustrum japonicum*)

- Dark green glossy leaves with slightly rounded over edges
- Evergreen shrub with a diffusing spread canopy when larger size
- In April-June produces small, white, fragrant, four-petaled flowers



## JAPANESE HONEYSUCKLE

(*Lonicera japonica*)

- Fragrant yellow and white trumpet flowers
- Twisting vine that has oval/oblong leaves that come in pairs along the stem
- Has small black fruits in autumn



## JAPANESE STILTGRASS

(*Microstegium vimineum*)

- Two to three inches in height, lance shaped
- Sprawling grass



## JAPANESE WISTERIA

(*Wisteria floribunda*)

- Woody climbing vine that moves counter clockwise upwards
- Drooping purple flower, similar to Chinese wisteria





**KUDZU**  
(*Pueraria montana*)

- Climbing, semi-woody vine (hairy when young), with broad lobed leaves
- Purple fragrant flowers in hanging clusters



**LEATHERLEAF MAHONIA**  
(*Berberis bealei*)

- Evergreen shrub with 2-4 inch holly-like leaves
- Leaves are opposite from each other along purplish leaf stalk
- Fragrant yellow flowers followed by waxy green fruit which mature to blue-black egg shaped fruit hanging like grapes

## MIMOSA

(*Albizia julibrissin*)

- Large fern-like fanned leaves feel soft to the touch
- Typically leaning and overhang
- Vibrant pink flowers resemble pompoms



**MULTIFLORA ROSE**  
(*Rosa multiflora*)

- Shrub with arching thorny stems
- Finely serrated oval leaves with five-petaled white flowers in May-June
- Green growth at the base of leafstalks are feathery



## PRINCESS TREE

(*Paulownia tomentosa*)

- Large leaves can be oval, heart-shaped, or three shallow lobes, and hairy on lower leaf
- Clusters of fragrant, pale violet flower in the spring
- Fruit is a dry brown capsule with four compartments



## SERICEA LESPEDEZA

(*Lespedeza cuneata*)

- Three to five feet tall light green plant with straight stems and few branches
- Small leaves grow in groups of three
- Small white flowers bloom July-October

## THORNY OLIVE

(*Elaeagnus pungens*)

- Grows densely with short stems, shrub-like
- Leaves are dark green, oval, with silver underside
- Small white bell-shaped flowers in the fall



## TRIFOLIATE ORANGE

(*Poncirus trifoliata*)

- Leaves of three alternate up the stem, and large thorns protrude from the stem
- In spring it has four to seven petaled flowers
- Its fruit ripens from green to bright yellow/orange



**CHINESE PISTACHE**  
(*Pistacia chinensis*)

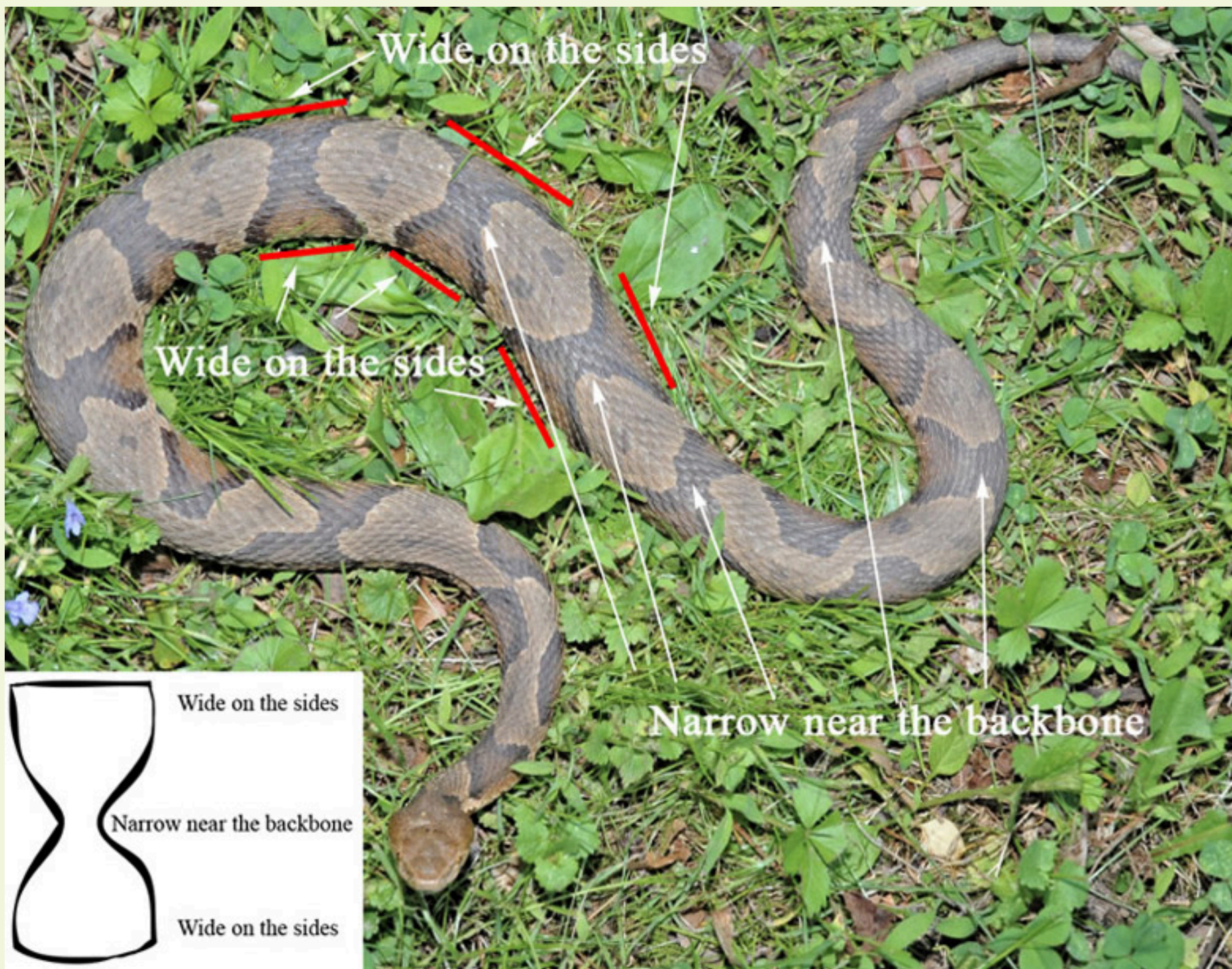


- Gray-ish brown peeling outer bark reveals inner salmon colored bark
- Dark green leaves with red and rounded drupes that ripen to blue in the fall



**THINGS TO REMEMBER IN THE FIELD**

Keep an eye out for any dangers, such as copperheads, which can be identified by:



As well as poisonous plants:

